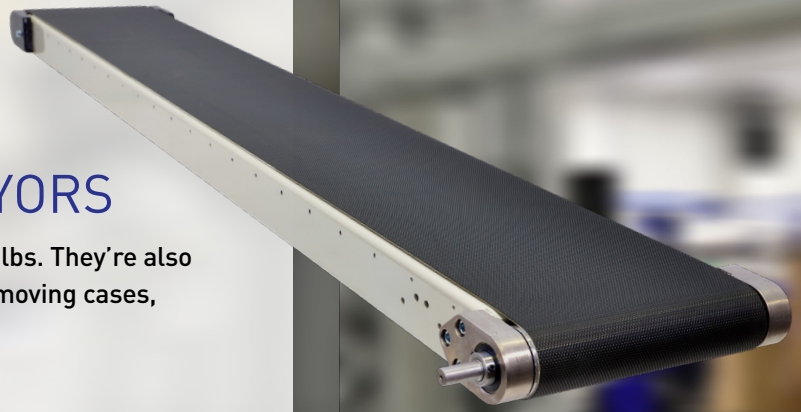


INDUSTRIAL SERIES

IS400

HEAVY DUTY BELT CONVEYORS

IS400 Conveyors move our heaviest loads — up to 600 lbs. They're also available in our widest widths, making them ideal for moving cases, large sub-assemblies, and other heavy products.



FEATURES AND BENEFITS

RIGID STEEL FRAME

Laser-cut, 10-gauge steel, single-body frame construction provides exceptional frame integrity when moving heavy loads. It is available in a grey powder coated steel or stainless steel.

CROWNED PULLEYS

For superior belt tracking, the drive and tail ends of the IS400 are equipped with crowned pulleys to take advantage of the natural tendency of belts to run centered on the longest part of the conveyor.



SELF-ALIGNING DRIVE BEARINGS

Drive bearings are self-aligning and equipped with seals and grease fittings for lubrication while the conveyor is running without requiring drive removal.

WIDE VARIETY OF OPTIONS

IS400 Conveyors are available with corrosion resistant and magnetic frame options. They may also be configured with multiple belts on a single conveyor or with v-guides for side-loading or side-exiting applications.



APPLICATIONS

Automation

Assembly

Automotive

Metal Working

Material Handling

IS400 | Industrial Series



Width
6" – 48"



Length
up to 36'



Load
up to
600 lbs



Speed
up to
360 fpm



QC CONVEYORS.COM
Visit our website for
more information about
our IS400 conveyors.