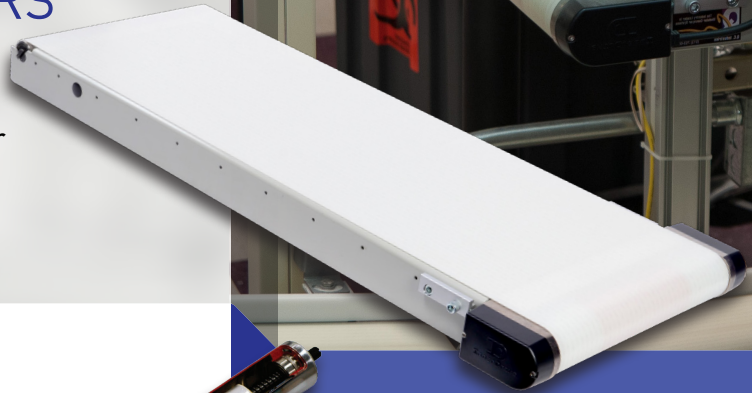


## INDUSTRIAL SERIES

# IS175-ID

## EMBEDDED DRIVE CONVEYORS

IS175-ID conveyors use embedded InnerDrive motors that allow them to take up less space than external drive packages for maximum flexibility. They are ideal for environments where workers will be in close proximity to the conveyor.



## FEATURES AND BENEFITS

### EMBEDDED MOTOR

This safe, efficient, 24v DC motor is inside the conveyor frame to conserve space. The motor makes IS175-ID conveyors maintenance-free, and the low voltage protects workers from dangerous currents.

### CROWNED PULLEY

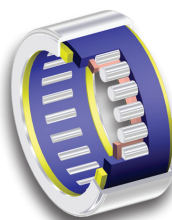
Both the drive and tail ends of the conveyor are equipped with crowned pulleys, to take advantage of the natural tendency of belts to run centered on the longest part of the conveyor.

### SNAP-IN TAIL ASSEMBLY

Snap-in, sealed tail assembly helps to facilitate belt changes. An eccentric bushing provides tracking control at the tail end.

### LUBE-FOR-LIFE BEARINGS

Lube-for-life bearings are precision roller bearings that offer greater load capacity, longer life, and utilize a solid lubricant that eliminates the need for re-lubrication for the life of the bearing.



## APPLICATIONS

Automation & Robotics

Assembly

Material Handling

Packaging

Marking & Coding

IS175-ID | Industrial Series



Width  
12-24"



Length  
up to 12'



Load  
up to  
75 lbs



Speed  
7-50 fpm



**QC CONVEYORS.COM**

Visit our website for more information about our IS175-ID conveyors.