

INDUSTRIAL SERIES

IS125-FT

PLASTIC CHAIN CONVEYORS

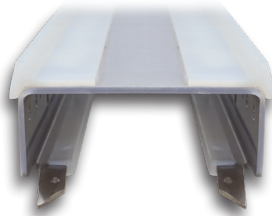
IS125-FT plastic chain conveyors are built for heavier loads, higher speeds, longer conveyors and maintaining the versatility and reliability of the IS125 platform.



FEATURES AND BENEFITS

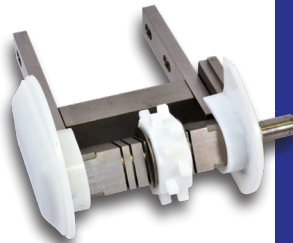
RIGID STEEL FRAME

Laser-cut, 10-gauge steel, single-body frame construction provides exceptional frame integrity. It is available in a standard grey powder coated steel or stainless steel.



WEAR STRIPS

Each IS125-FT frame is outfitted with UHMW wear strips for smooth, quiet movement and continuous belt tracking. Three standard wear strips are available with sides that sit flush with the belt and sides that extend above the belt height for product control.

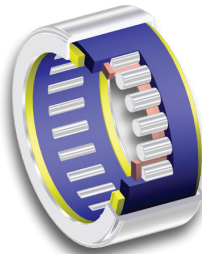


DRIVE ASSEMBLY

These plastic chain conveyors have a unique sprocket drive assembly which allows for heavier loads, non-slip belt movement, consistent belt tracking and higher speeds.

PLASTIC CHAIN BELTING

IS125-FT belts are 1" pitch modular belts, meaning each of the interchangeable chain pieces are 1" wide and linked together with plastic pins. We offer flush grid, flat top, and grip top in a variety of plastics including FDA, antistatic, chemical resistant, and heat resistant.



LUBE-FOR-LIFE BEARINGS

Lube-for-life bearings are precision roller bearings that offer greater load capacity, longer life, and utilize a solid lubricant that eliminates the need for re-lubrication for the life of the bearing.

APPLICATIONS

Automation

Assembly

Automotive

Material Handling

IS125-FT | Industrial Series



Width
4-24"



Length
up to 40'



Load
up to
500 lbs



Speed
up to
375 fpm



QCCONVEYORS.COM

Visit our website for more information about our IS125-FT conveyors.