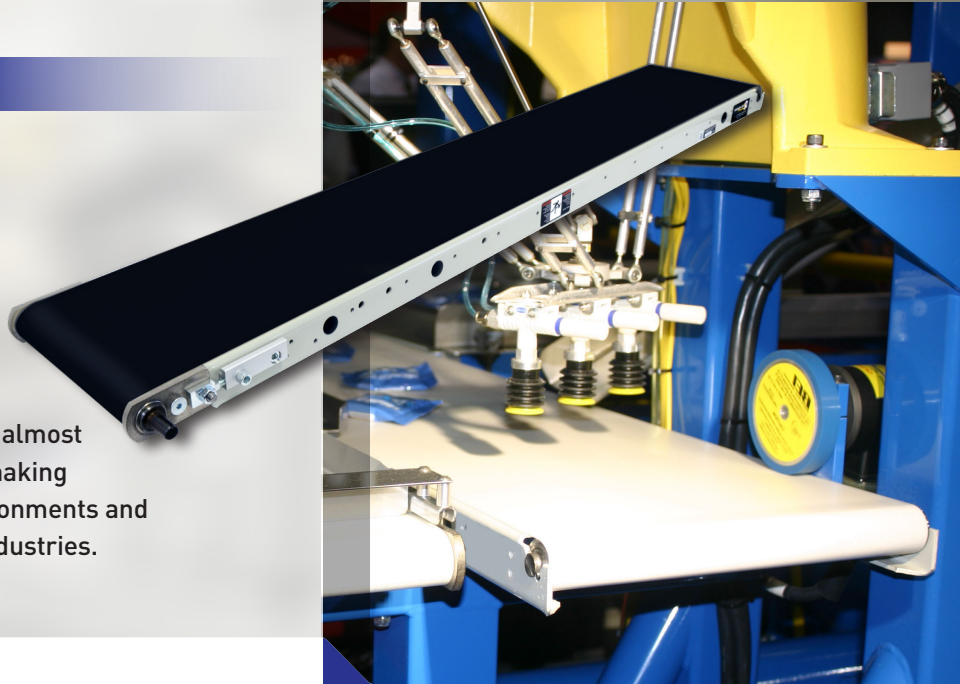


INDUSTRIAL SERIES

IS125

FLAT BELT CONVEYORS

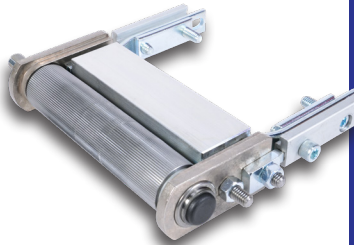
IS125 flat belt conveyors are versatile and reliable. The low, 1.89" profile steel frame allows them to fit almost any application, including tight spaces, while also making them perfect for applications with demanding environments and heavier loads like metal working and automotive industries.



FEATURES AND BENEFITS

STAND-ALONE DRIVE ASSEMBLY

The straight knurl, stand-alone drive assembly guarantees bearing alignment and allows the conveyor to be tracked at the drive end. A straight knurl design prevents premature belt wear and creates enough friction for a heavier load carrying capacity.



RIGID STEEL FRAME

Laser-cut, 10-gauge steel, single-body frame construction provides exceptional frame integrity. It is available in a grey powder coated steel or stainless steel.

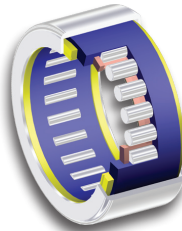
SNAP-IN TAIL ASSEMBLY

The snap-in tail assembly is the key to the IS125's best-in-class five-minute belt change. Thrust washers provide axial float to protect the bearings and allow the assembly to move with the natural camber of the belt.



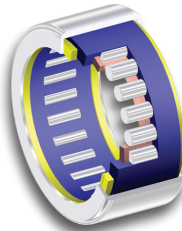
CROWNED PULLEYS

For superior belt tracking, the drive and tail ends of the IS125 are equipped with crowned pulleys to take advantage of the natural tendency of belts to run centered on the longest part of the conveyor.



LUBE-FOR-LIFE BEARINGS

Lube-for-life bearings are precision roller bearings that offer greater load capacity, longer life, and utilize a solid lubricant that eliminates the need for re-lubrication for the life of the bearing.



APPLICATIONS

Automation

Assembly

Automotive

Metal Working

Material Handling

IS125 | Industrial Series



5 DAY LEAD TIMES

Conveyors built with our most popular belt options qualify for our Quick Ship Program.



CONFIGURE AND QUOTE ONLINE 24/7

Engineer developed rules make sure all your components work together properly.



Width
2-24"



Length
up to 12'



Load
up to
450 lbs



Speed
up to
316 fpm