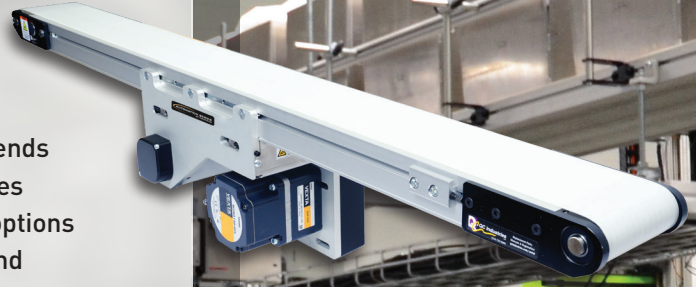


AUTOMATION SERIES

AS40-CD

CENTER DRIVE CONVEYORS

AS40-CD conveyors are versatile conveyors designed with a movable center drive unit that sits below the belt leaving both ends of the conveyor clear for machine integration. Automation Series conveyors are designed with you in mind, with a wide array of options to customize them for any application from robotic assembly and automotive to pharmaceutical and packaged foods.



FEATURES AND BENEFITS

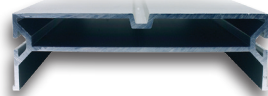
MOVABLE CENTER DRIVE

Movable Center Drives can be quickly reconfigured to any point along the length of the conveyor – simply loosen a few screws, slide to the new location and re-tighten. The drive is located under the conveyor, leaving both ends free for machinery integration or transfers to other equipment.



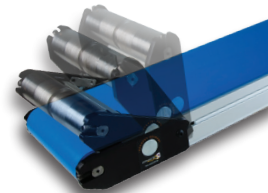
RIGID ALUMINUM FRAME

AS40-CD frames are designed to maintain alignment and prolong belt and bearing life. Frames 18" wide and under feature a sturdy single-piece box construction, while frames 18" and wider feature a rigid aluminum/steel frame.



TENSION RELEASE TAILS

Tension Release tails flip up at the push of a button, releasing tension on the belt to allow the operator to clean under the belt in the event of spills. Tracking and tension settings are maintained when the tail is snapped back into place.



CROWNED PULLEYS

AS40-CD conveyors use crowned pulleys to take advantage of the natural tendency of belts to run centered on the longest part of the conveyor. V-guide belts are available for applications that require side-entering or -exiting.



URCAP

A free URCap allows AS40-CD Conveyors to be easily integrated with Universal Robots, allowing the robot to control start/stop, forward/reverse and choose between multiple speeds.

APPLICATIONS

Automation & Robotics

Assembly

Automotive

Material Handling

Pharmacy & Medical

Packaging

Marking & Coding

AS40-CD | Automation Series



5 DAY LEAD TIMES

Conveyors built with our most popular belt options qualify for our Quick Ship Program.



CONFIGURE AND QUOTE ONLINE 24/7

Engineer developed rules make sure all your components work together properly.



Width
2-24"



Length
up to 26'



Load
up to
120 lbs



Speed
up to
400 fpm



Visit qcconveyors.com for more information