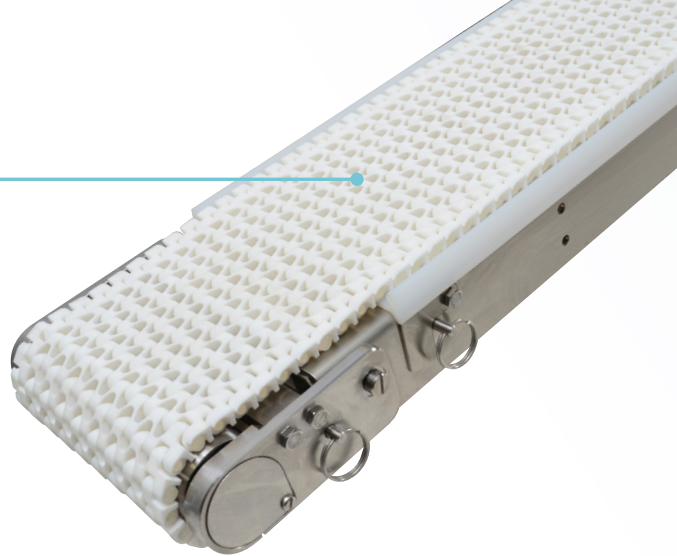


**HYDROCLEAN  
SERIES**

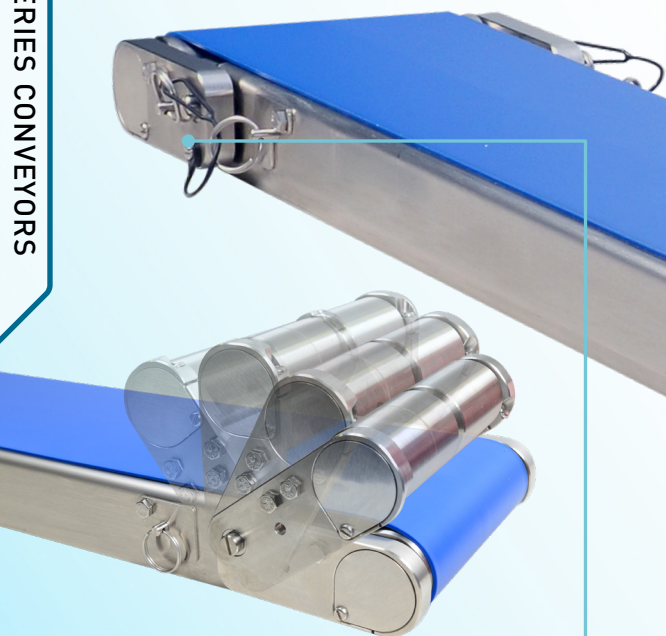
### Plastic Chain Belting

- » Available with FDA approved plastic chain belting



### Redefining "In Place Cleaning"

- » The Tension Release tail flips up to relieve tension on the belt simply by removing two pins, making it easy to remove the belt or clean underneath



### Quiet Operation

- » Conveyor designed for quiet operation for use in close proximity to workers

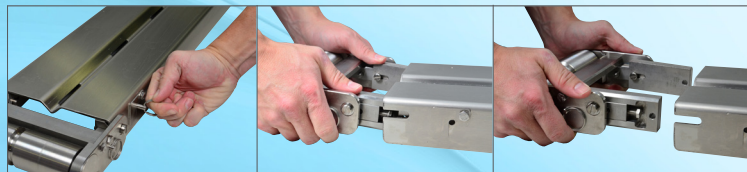


Watch the video to see how easily HC200 conveyors can be disassembled without tools  
[qcconveyors.com/hydroclean/video](http://qcconveyors.com/hydroclean/video)

### Tool-less drive removal



### Tool-less tail removal



### Unique Pull Pin Design

Every HC200 conveyor can be fully disassembled without tools to aid your facility's in place cleaning efforts. Additionally, they feature a sanitary design meant to minimize opportunities for bacteria to accumulate.

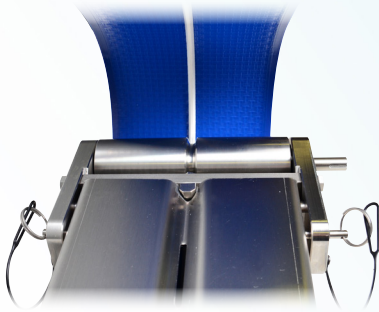




# Clean, Efficient Conveying

## V-Guided Belts

- » V-Guide helps to ensure positive tracking in most environments or applications
- » Available belts include accumulation, anti-microbial and totally encapsulated options



HydroClean Series Conveyors feature a sanitary design for handling all types of applications including food products, pharmaceutical, medical devices, clean rooms and more. They offer a variety of options designed to fit your unique application.

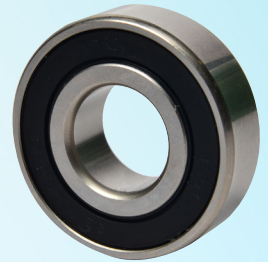
## NSF & BISSC Certified

- » Minimal mated surfaces that can be easily disassembled for cleaning
- » Slotted frame and soft angles promote drainage



## Sealed Ball Bearings

- » Stainless steel, sealed ball bearings support high speeds up to 300 FPM
- » Stainless steel cover protects bearings during cleaning



## Hex Head Fasteners

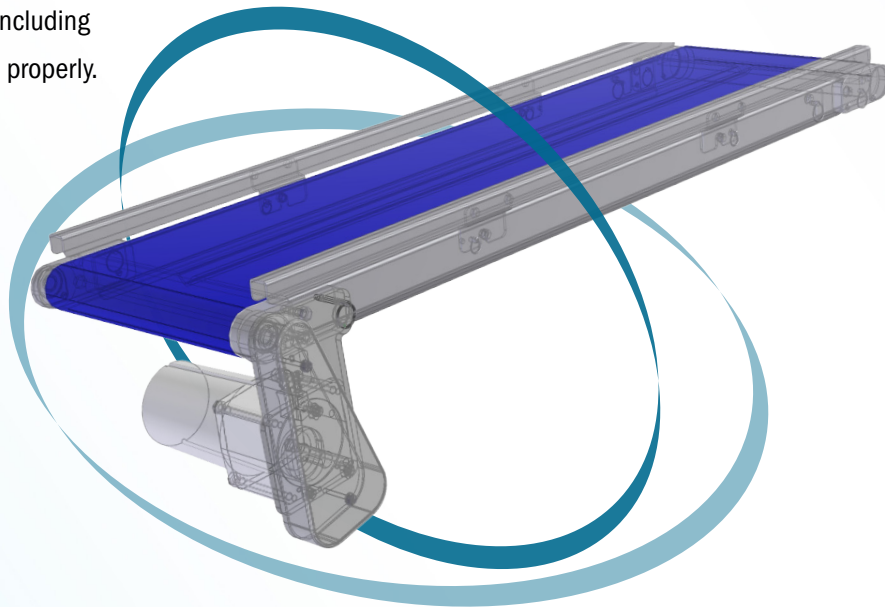
- » Hex head fasteners with no exposed threads where bacteria could accumulate

## Specifications

- » Widths: 4", 6", 8", 10", 12", 18", 24"
- » Lengths: 42" to 18'
- » Load Capacity: 120 lbs
- » Profile: 2.34"
- » Speeds: to 300 FPM
- » All stainless steel construction

# 24/7 Online Quoting

Configure and quote conveyors 24 hours a day using our online Conveyor Configurator. An intelligent assistant uses engineer-developed rules to make sure all your components – including gearmotors, stands, and sides/guides – work together properly.



## Conveyor Configurator

*Fast, intelligent online configuration and quoting*



### Fast, Intelligent, Online

- » Manage multiple conveyors in a single quote using separate bills of materials
- » Our algorithms identify errors and offer options for making corrections
- » Register your conveyor to qualify for our 10 Year Warranty
- » Access appropriate manuals and videos by serial number to make maintenance easy
- » View past orders and quote replacement parts directly from the original bills of materials, complete with exploded views to help you find exactly the right part

### Download 3D CAD Models

Once you've designed a conveyor with the Conveyor Configurator, you can download all the 3D CAD models, exploded views and specifications in one package to make integration with your application easy. We've included sides/guides, drives, stands and automation accessories, so it's easy to drop the complete conveyor system directly into your application.



### 10 Year Limited Warranty


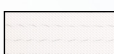
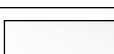







Our products are developed and tested with long-term reliability in mind. To ensure our conveyors will run problem-free in the field for many years, we demand the tightest tolerances in the industry and manufacture our components using the most advanced processes available. Each conveyor is inspected at several points of the manufacturing process to ensure quality, including a final operational test before it leaves our facility. That's why we confidently stand behind our products with a 10 year warranty when they're registered at [qcconveyors.com/serial](http://qcconveyors.com/serial).





HydroClean Series conveyors feature v-guided belts for positive tracking in most applications.

## Belt Choices

	Ordering Code	Surface Description	Surface Material	FDA	BISSC & NSF*	Anti-microbial	Anti-Static	Topside Coefficient of Friction	Short Term Part Max Temp. (°F)	Max Ambient Operating Temp. (°F)	Average Belt Thickness (inches)
<b>Multi-Purpose</b>											
	PVD	Smooth	Urethane	✓			✓	Low	176	176	0.050
	MVA	Smooth	Urethane	✓			✓	Low	176	176	0.059
	MVE	Smooth	Urethane	✓			✓	Medium	176	176	0.060
	UVE	Smooth	Urethane	✓		✓	✓	High	176	176	0.050
<b>Sealed Edge</b>											
	PVF	Smooth, Sealed Edge	Urethane	✓	✓		✓	Low	176	176	0.050
	MVG	Smooth, Sealed Edge	Urethane	✓	✓		✓	Medium	176	176	0.060
	MVB	Smooth, Sealed Edge	Urethane	✓	✓		✓	Low	212	176	0.071
<b>Totally Encapsulated</b>											
	KVA	Smooth, Sealed Edge	Polyurethane	✓	✓	✓	✓	Low	176	176	0.070
	KVB	Smooth, Sealed Edge	Polyurethane	✓	✓	✓		Low	176	176	0.060
<b>Accumulation</b>											
	AVA	Fabric	Urethane	✓			✓	Very Low	158	158	0.043

More belt options available at [qcconfig.com](http://qcconfig.com)

\*Meets NSF standards

## Cleats

Cleats are high frequency welded to the MVE white urethane belt

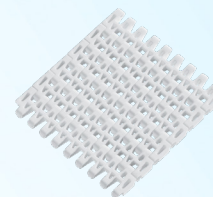
Cleat tolerance may vary, please contact the factory if cleat accuracy is critical.

Code	WVB	WVE	WVG	WVI	WVK
Cleat Height	5mm	½ in	1 in	2 in	3 in

## Plastic Chain

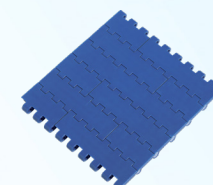
### Flush Grid Belts

**Material:** Polypropylene  
General Purpose belt; low coefficient of friction for accumulation applications; economical



### Flat Top Belts

**Material:** Antimicrobial Polyethylene  
Cold application belt with antimicrobial additive; open hinge design for easy cleaning



# Stands, Mounts, and Sides

## Stainless Steel Stands

Stainless steel stands offer an open design for ease of cleaning. Pull-pin attachment makes belt removal easy. Stainless steel leveling feet (L) included; casters (C) optional. Flip down angle braces (included) enhance stability and remove easily with pull pins for belt changes.

Part # HE1-0184-HH-WW-L

## Outrigger Stands

Part # HE1-0185-HH-WW-C/L

## Aluminum Stands

Extruded aluminum stands offer exceptional value for applications where stainless steel isn't necessary. Pull-pin attachment makes belt removal easy. Painted steel leveling feet (L) included; casters (C) optional.

Part # HE1-0180-HH-WW-C/L

## Tool-less Belt Removal



Watch the video to see how easily HC200 conveyors can be disassembled without tools at [qcconveyors.com/hydroclean/video](http://qcconveyors.com/hydroclean/video)

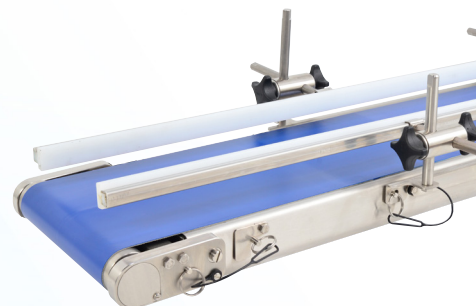


» Stand brackets flip out of the way for easy belt removal

## Adjustable Guides

Adjustable Guides are designed to guide the product being conveyed. The rails adjust vertically and horizontally, offering the ultimate in flexibility. Guides can be removed without tools for cleaning and belt changes.

Part # HE1-0281-LLL-T (Built to NSF specifications)



## Fixed Sides

Ideal for containing product on the belt. Sides can be removed without tools for cleaning and belt changes. Built to NSF specifications.

### 1" Sides

Part # HE1-0174-LLL

### 2" Sides

Part # HE1-0215-LLL

### 1" Sides with Wearstrip

Part # HE1-0178-LLL

### 2" Sides with Wearstrip

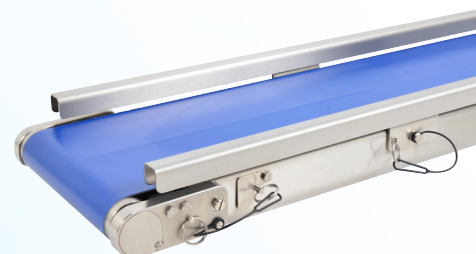
Part # HE1-0216-LLL

### 1" Indented Sides

Part # HE1-0219-LLL

### 2" Indented Sides

Part # HE1-0218-LLL



## Universal Mounts

Designed to attach conveyor to tabletop or other machinery. Can be positioned at any point along the conveyor frame.

### 3.5" Top of belt

Part # HE1-0181-04

### 5" Top of belt

Part # HE1-0182-04





# Drive Packages

## Bottom Drive

- » Belt is highest point of conveyor
- » Supports speeds up to 300 FPM and loads to 120 lbs



## Side Drive

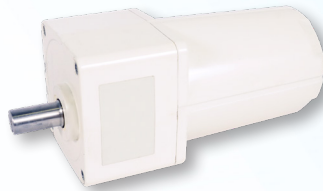
- » Motor sits to the side of the conveyor
- » Supports speeds up to 300 FPM and loads to 120 lbs



## Washdown Standard Duty Gearmotors

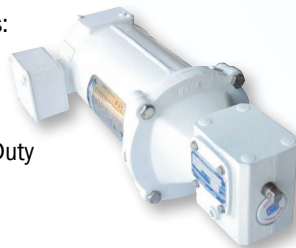
- » Available in AC, Fixed Speed\*
- » Available in 115v Single Phase, 230v Single Phase, or 230v Three Phase
- » IP67 rating

\* 230v Three Phase motor can be variable speed when used with an AC inverter



## Washdown 56C Heavy Duty Gearmotors

- » Available in AC or DC, Fixed or Variable Speed
- » Available for the following power sources:
  - 115v/230v AC Single Phase
  - 230v/460v AC Three Phase
  - 230v/460v AC Three Phase Inverter Duty
  - 90v DC



## Standard/Heavy Duty Gearmotors

- » Available in DC, Variable Speed
- » Available in 115v Single Phase, 230v Single Phase, or 230v Three Phase
- » IP65 rated gearmotor
- » Includes Controller and 3m cables with IP20 connectors



# Learn More

## Additional Products Available from QC Conveyors

In addition to our easy-to-clean **HydroClean Series** conveyors, we offer a variety of other products. **Automation Series** conveyors are built on a rigid aluminum frame with features designed for ease of use. Our **Industrial Series** includes IS125 conveyors built for heavier loads, IS175-ID conveyors with an embedded drive, and IS300 conveyors which feature a timing belt with accuracy to  $\pm 0.015"$ . Please visit our website or contact your local distributor for more information.



### qcconveyors.com

QC Conveyors' website — **qcconveyors.com** — is your resource for the most up-to-date information about all our products.



### Conveyor Configurator

Configure & quote conveyors online, 24 hours a day. See page 4 for more information.



### Your Local Distributor

Contact our sales department today at (513) 753-6000 to find your local distributor.



(513) 753-6000 | [qcconveyors.com](http://qcconveyors.com) | Part # MKTG-HC-0119



THE DURAVANT FAMILY OF COMPANIES

ARPAC | FISCHBEIN INTERNATIONAL | FMH CONVEYORS | HAMER-FISCHBEIN | KEY TECHNOLOGY | MARLEN INTERNATIONAL | MESPACK | OHLSON | QC CONVEYORS

[www.duravant.com](http://www.duravant.com)